

I&RS Mission

The department of I&RS was created to accomplish the following missions:

- ⇒ The Plainfield Public Schools, in partnership with its families and other community members, shall connect children and families to resources so that every child has:
- Positive relationships with caring adults;
 - Safe places and structured activities during non-school hours to learn and grow;
 - Access to health services from 3-21;
 - Effective education focused on high academic standards;
 - Opportunities for community services

What is Intervention & Referral Services?

Intervention & Referral Services is designed to serve as a centralized mechanism to develop, integrate and coordinate support services for Plainfield Public Schools youth.

For additional information or to make a referral contact your School's I&RS Team Leader.



HELP IS JUST A CALL AWAY

Plainfield Public Schools

Intervention & Referral Services

Supporting the Academic,
Social & Emotional
Development of our Students



Intervention & Referral Services (I&RS)

TEAM APPROACH...

Our diverse teams are designed to provide effective systems for referrals, case management, information dissemination, and brokering a variety of health and human services.



We believe -

**Together
Everyone
Achieves
More!**

Team Composition...

Our Team consists of a diverse group of educators who are committed to the academic and social emotional development of students. Team members bring their expertise and knowledge to the table to participate



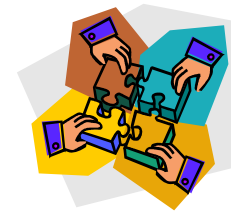
in the development of a comprehensive action plan for

students. The team may consist of:

- ◆ A School Administrator
- ◆ A Social Worker
- ◆ Guidance Counselor
- ◆ Nurse
- ◆ Child Study Team Member
- ◆ School Based Youth Services Program Counselor
- ◆ Family Liaison
- ◆ Parent
- ◆ Student
- ◆ Teacher
- ◆ Community Member

Referrals...

Referrals can be made by any individual interested in helping our students. Students may need services such as: counseling, tutoring, health care, behavior/anger management, attendance problems, family issues, peer pressure, self esteem, transition and adjustment to high school.



"Helping you put the pieces together."

"Everyone brings something to the table."